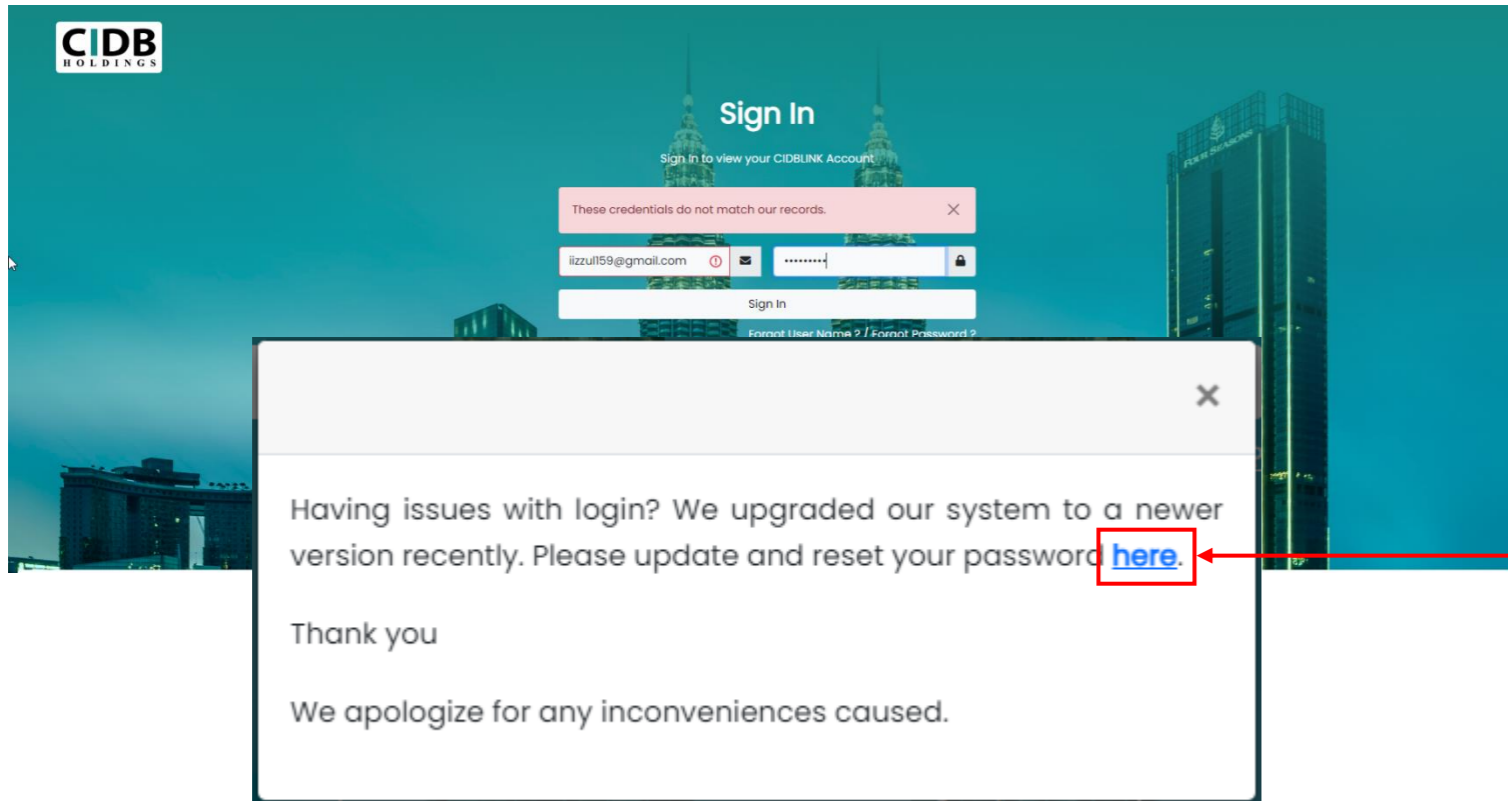


STEPS TO SIGN IN FOR OLD VERSION OF E-SICW CIDBH USERS (User Who Has Sign Up in CIDBLINK Portal Before)

1



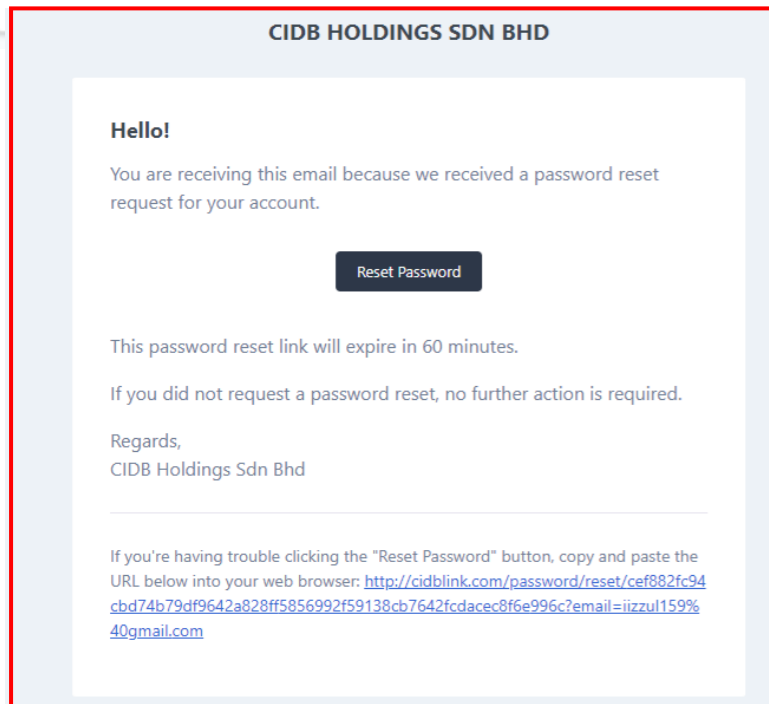
- Pop up box will appear after user failed to sign in with previous created username and password in old version of e-SICW CIDBH.
- Click **“here”** at pop up box to reset the password.

STEPS TO SIGN IN FOR OLD VERSION OF E-SICW CIDBH USERS (User Who Has Sign Up in CIDBLINK Portal Before)

Reset Password

Email Address

[Back to login](#)



Reset Password

Email Address

Password

Confirm Password

1

- Enter your email address and click 'Send Password Reset Link'.

2

- User will get email notification from noreply@cidblink.com for "Reset Password Notification" to reset your password.

3

- Click 'Reset Password'.
- After complete enter **new password**, user can proceed to Sign In into the system.
- All your profile data/ staff details will be the same with created account before.

REMINDER

- For further guidelines, please download **New User Manual and Guidelines of e-SICW CIDBH course** in our website www.cidbholdings.com.my > to click **Assessment** > to click **e-SICW CIDBH**